

Adding Programs to Your Startup Group in Windows XP

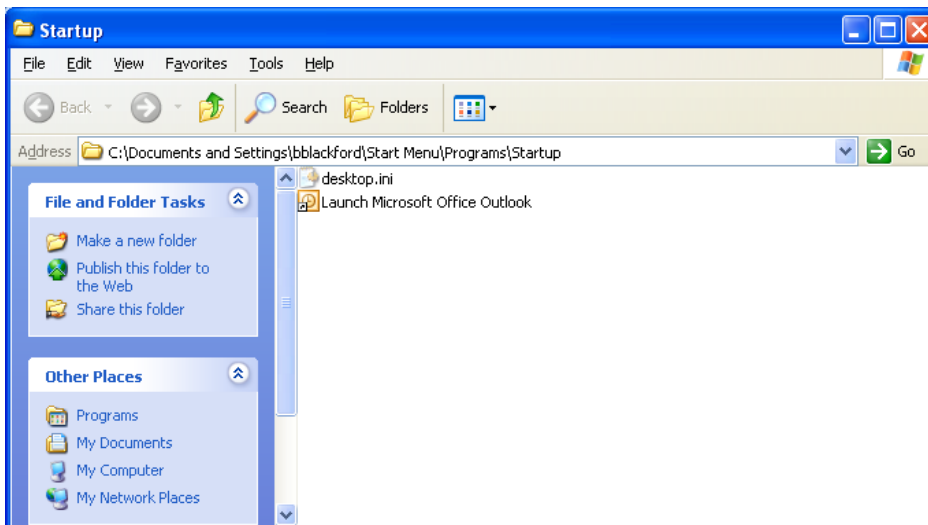
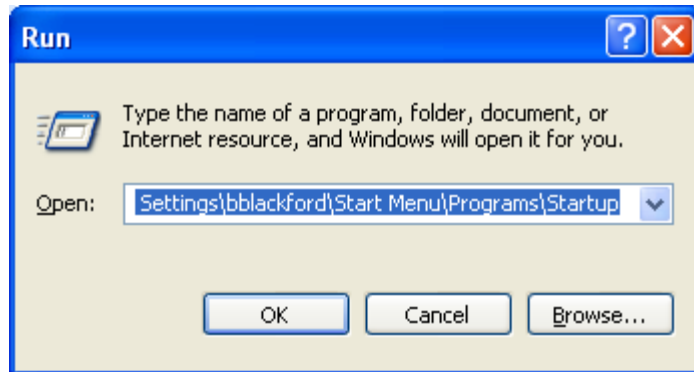
Do you often start the same programs each time you logon to your computer? If so, you're not alone. Almost all computer users utilize a certain set of programs routinely.

Well, if you use the same programs each and every time you logon to your computer, wouldn't it be nice to have those programs open for you automatically? Here's how:

- 1) Left mouse click on **Start**, then click **Run**.
- 2) In the Run dialog box that opens, type:

C:\Documents and Settings\%username%\Start Menu\Programs\Startup

Change %username% to your Windows username (the same username used to logon to your computer).



- 3) The Startup folder appears. This folder is used to hold files and shortcuts that should open automatically when you logon to your computer.

4) Left mouse click **Start**, then click **All Programs** and locate the program you would like to start automatically. **Hold down the right mouse button on the program you chose, drag it to the Startup folder that you opened, and release the right mouse button.** Choose **Copy Here** from the box that appears to create a copy of the shortcut to your program.

NOTE: Do NOT choose Move Here as it will remove it from your Start menu.

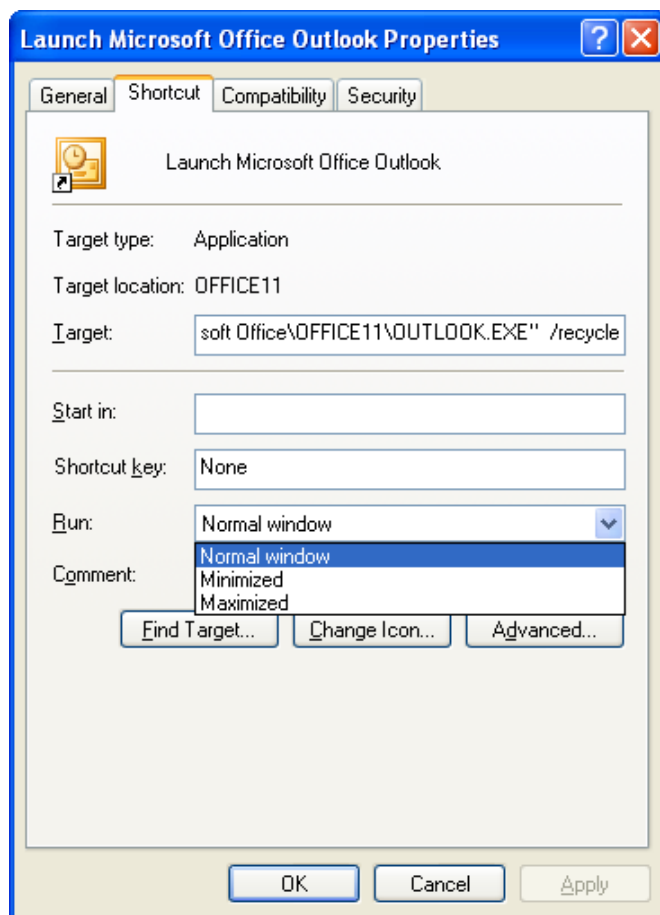
NOTE: If you choose to select a file from somewhere other than the Start Menu, you may perform the same actions to create a shortcut in your Startup folder, except choose **Create Shortcuts Here** instead of **Copy Here**.

5) The program you chose in step 4 will now open when you logon. However, you may change how it opens if you desire. By default, the program will open in a normal window the same as if you had opened it yourself. To change how the program opens, right mouse click the shortcut in the Startup folder and choose **Properties**. In the **Run** line under the **Shortcut** tab, you may choose Normal Window, Minimized, or Maximized as the default method for the program to open.

6) Click **OK** and you're **Finished!** Now your program will run each time you logon to your computer and open the way you specified (normal, minimized, or maximized).

IMPORTANT NOTE: Adding programs to your startup folder may affect your computer's performance as it increases the number of tasks the computer must perform immediately upon logon. If you experience undesirable slowness during or immediately after logon after adding programs to your startup folder, you may remove them by simply deleting the shortcut from the Startup folder accessed in step 2.

About Desktop Resources, Inc.



Desktop Resources, Inc. was founded in 1995 by Tony Schafer, and is a leader in helping organizations couple their business initiatives with the technology to address those needs. DRI's "InformIT" managed services offerings proactively manage client infrastructure and strive to prevent problems before they occur. For more details, contact DRI at (317) 596-3650 or <http://www.DesktopResources.com>